

THE

VARD OGER

...SHE'S COMING

EXECUTIVE SUMMARY

TITLE

THE VARDØGER

LENGTH

FEATURE FILM

GENRE

SUPERNATURAL

BUDGET

\$5 MILLION

LOG LINE

Trapped in an old, abandoned hospital with no memories of how they got there, seven patients must join forces to defeat a malevolent, ghostly entity while solving the mystery of their captivity.



WHAT IS A

VARDØGER?

"The Scandinavians consider it a warning sign that someone is about to arrive. If you see that person's spirit, he or she is about to show up at your door."

PROF. EFREM GREEN

SYNOPSIS

Without warning, Jack Gibson finds himself wandering the halls of a desolate and decaying hospital. He has no memory of how he got there and quickly learns he can't leave. The medical staff and patients appear to have left abruptly or simply vanished. Whoever -- or whatever -- is responsible for Jack's admittance has made sure his discharge is denied.

But Jack soon discovers he's not alone. His wife, Victoria, has her own private room, as do five other "residents," each with their own dark pasts and no memories of their arrivals. The only exit from their private Hell is chained shut, with several unbreakable locks keeping the iron barrier in place. The mystery of how the inhabitants got there is soon overshadowed by an immediate need to escape. A terrifying phantom -- known as The Vardøger -- has them on the run, and may be the one who imprisoned them. Though the ghostly spirit takes a beautiful, feminine form, its evil and destructive nature can't be ignored.

With the help of his new allies, Jack devises an escape plan. However, he soon discovers the Vardøger isn't the only malevolent force inside the hospital walls -- he's been betrayed by someone in the group. Jack must now face the Vardøger alone, hoping this epic showdown will lead to his release.



MOOD AND

TONE

HOUSE ON HAUNTED HILL

MEETS

THE SIXTH SENSE

Six strangers have the chance to make
\$1,000,000 EACH
All they have to do
is make it through
the night...
ALIVE.



**HOUSE ON
HAUNTED HILL**
EVIL LOVES TO PARTY

CASTING BY JAMES NEWMAN HOWARD
PRODUCTION DESIGNER JAMES NEWMAN HOWARD
EXECUTIVE PRODUCERS LARRY FULTON AND TAK FUJIMOTO, A.S.C.
PRODUCED BY FRANK MARSHALL, KATHLEEN KENNEDY AND BARRY MENDEL
SCREENPLAY BY M. NIGHT SHYAMALAN
DIRECTED BY M. NIGHT SHYAMALAN

OCTOBER 29

BRUCE WILLIS



**THE #1
THRILLER OF
ALL TIME!**

THE SIXTH SENSE

HOLLYWOOD PICTURES and SPYGLASS ENTERTAINMENT PRESENT
A KENNEDY/MARSHALL/BARRY MENDEL PRODUCTION BRUCE WILLIS "THE SIXTH SENSE"
AN M. NIGHT SHYAMALAN FILM TONI COLLETTE OLIVIA WILLIAMS HALEY JOEL OSMENT
CASTING BY JAMES NEWMAN HOWARD COSTUME DESIGNER JOHANNA JOHNSTON EXECUTIVE PRODUCERS LARRY FULTON AND TAK FUJIMOTO, A.S.C.
PRODUCED BY FRANK MARSHALL, KATHLEEN KENNEDY AND BARRY MENDEL SCREENPLAY BY M. NIGHT SHYAMALAN
DIRECTED BY M. NIGHT SHYAMALAN



THE HEART OF

THE

VARDUGER

"I've seen its soul. I looked it right in the eyes and saw pure evil. It was grotesque."

VICTORIA GIBSON

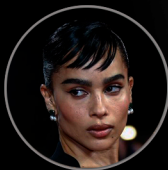
CHARACTERS



THE VARDÖGER



JACK GIBSON



VICTORIA GIBSON



EFREM GREEN



AGNES BURWELL



LBJ



ALEXANDER KRUPIN



MR. MENDELSON

CHARACTER PROFILES



Magnificent and beautiful, the ghostly Vardøger is a sight to behold. Her intoxicating glow transforms the dark hospital corridors as she destroys everything in her path. Though captivatingly stunning, The Vardøger's graceful elegance is merely a guise for her innate, terrifying malevolence.

Archetypes: Ana de Armas, Zoë Kravitz and Minka Kelly

THE VARDØGER

CHARACTER PROFILES



JACK GIBSON

Intelligent and resourceful, Jack is a man of action. With no memory of how he arrived at this haunted infirmary, he seeks help from the six other residents, none of whom can provide clarity. His presence catches the attention of the ghostly Vardøger, and may trigger a deadly, predestined outcome.

Archetypes: Milo Ventimiglia, Wes Bentley and Taye Diggs



VICTORIA GIBSON

Victoria is Jack's wife and his surprise companion in their mysterious hospital prison. Like Jack, she can't remember how she got there, but she appears to know more about their supernatural nemesis than she lets on.

Archetypes: Zoë Kravitz, Rebecca Ferguson and Rose Byrne

CHARACTER PROFILES



PROF. EFREM GREEN

An expert in paranormal studies, Professor Green's knowledge of spirits is paramount to the group's survival. His history with Jack and Victoria creates tension as the trio become unlikely allies.

Archetypes: Giancarlo Esposito, Malcolm McDowell and Bryan Cranston



DR. ALEXANDER KRUPIN

Alexander "Doc" Krupin is the smartest man in the hospital but the least trustworthy. He works meticulously to find a way out, but his efforts seemingly lead to betrayal and an alliance with The Vardøger.

Archetypes: Michael Nyqvist, John Malkovich and Ilia Volok

CHARACTER PROFILES



AGNES BURWELL

A hoarder by nature, Mrs. Burwell's reluctance to leave her room has kept her safe from The Vardøger's wrath. She prefers cats to people and lets the others fend for themselves.

Archetypes: Kathy Bates, Octavia Spencer and Frances Conroy



LYNDON B. JOHNSON

Disheveled and dirty, Lyndon Beauregard Johnson looks like your typical homeless man. But he's no fool, and he survives this haunted hospital using his street smarts and deflects criticism with his sarcastic wit.

Archetypes: Steve Buscemi, Danny DeVito and Robert Carlyle



SAUL MENDELSON

An Alzheimer's patient, Mr. Mendelsohn has only a few things to say and a penchant for repeating them. His mind is a prison within a prison, but it may hold the key to the group's freedom.

Archetypes: Kevin Pollak, Elliot Gould and Gabe Kaplan

THE

VARDODGER'S

LAIR

"Welcome to the asylum. Sanity's vacation getaway."

LYNDON BEAUREGARD (LBJ) JOHNSON

BUDGET CONCERNS

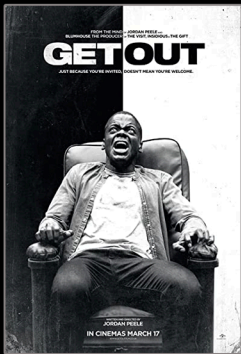


The majority of the film takes place within an abandoned hospital, keeping location costs low. Only a few flashback scenes at the end will require different settings.

There are only eight core characters, reducing strain on the casting budget. The use of day players and background actors will be minimal.



FILM COMPS



Budget \$4.5 Million
 US Gross \$176 Million
 World Gross \$255 Million



Budget \$1.5 Million
 US Gross \$54 Million
 World Gross \$100 Million



Budget \$5 Million
 US Gross \$46 Million
 World Gross \$61 Million



Budget \$5 Million
 US Gross \$51 Million
 World Gross \$104 Million

PRODUCERS



LANA GAUTIER



RON L PALMER

LANA GAUTIER



A native of Minsk and a graduate of the prestigious Belarusian State Academy of Arts, Lana is a talented actress and producer with a savvy intellect for business. Calling upon her educational background and artistic creativity, she has overseen the production of several independent film projects and continues to be a dynamic force in the entertainment industry, both in front of and behind the camera.

She has received professional acting training from the Sanford Meisner Center, The Acting Corps and South Coast Repertory.

RON L. PALMER

The Writer of *The Vardøger* screenplay, Ron has a strong background in film and television production, including a lengthy career as a broadcast journalist. He's comfortable both in front of and behind the camera and has overseen the creation of several independent film productions. He's also worked on projects for HBO Sports and MLB Network.

Ron served as Associate Producer on the auction house reality show *Bid America* and has won multiple awards, including an Emmy, for his efforts.



CONCLUSION

So... what's with that little ø that looks like the *Ghostbusters* symbol?

That's called a *minuscule*, and it's used primarily in the Norwegian, Danish and Faroese languages as well as the nearly obsolete language of Southern Sami. The minuscule is a vowel and delivers the *eu* sound – think of the French word *bleu* – or an *uh* sound. In the early days of typography, English speaking printers didn't know the symbol's name, so it simply became known in the industry as the "slashed O."

CONTACT LANA

Embrace Real Artists
REP: Chrystal Ayers
909-809-0685
chrystal@embracetalent.com



CONTACT RON

Rabid Dawg Classic
Productions
323-326-4089
ron@ronpalmer.com